



Electric powered winch solutions

BMS Davinci and ACE Technology
present:

Electric powered 14 and 1,5ton umbilical winches

- Lift capacity: 14ton @ 60m/min
- All electric power mgmt and control system solution. Integrated in same MCC cabinet.
- Extremely smooth operation at low to zero speed.
- Electric control of spooling device on 14ton type.
- E-sea winch. Web service enabled.
- Liquide cooled brake resistor
- Electronic disc brake monitoring system, for AC motors
- Signal monitoring system for enhanced safety.

14 ton winch with umbilical cable



1,5ton winch unit



14ton winch – 220kw- sidewiew



14 + 1,5ton winch in skid



Spooling device

- Full automatic spooling
- Manuell override
- Increment or reduce speed on spooling
"on the fly"
- Easy to re-calibrate if new cable dimention is required

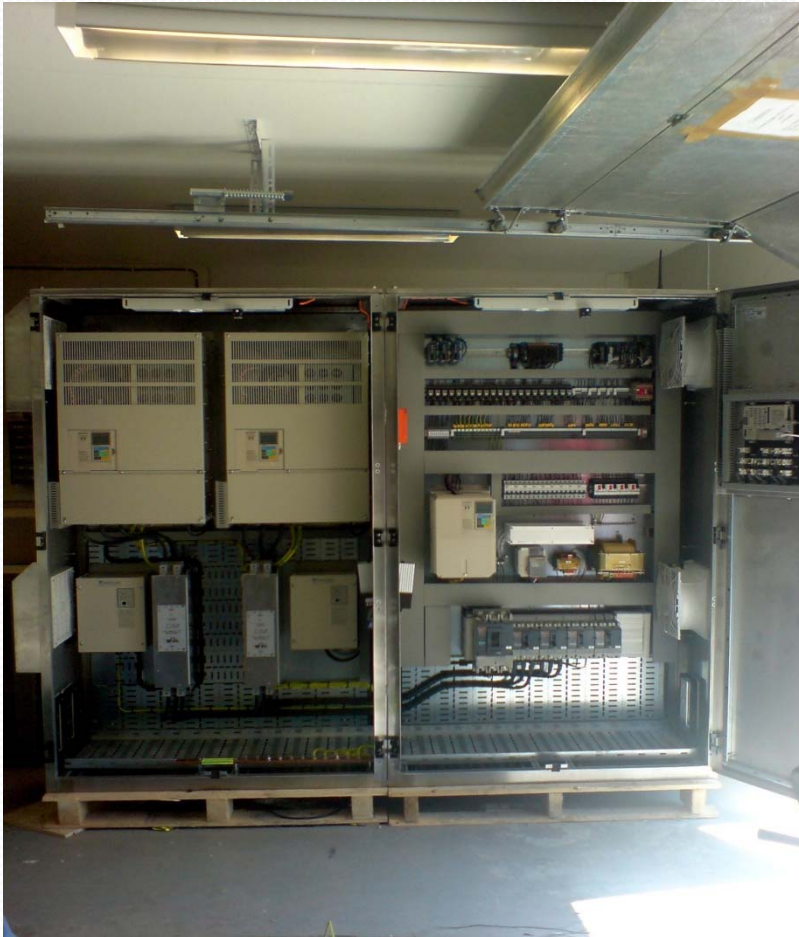


MCC system



- SSR built Motor control center
- IP56 for outdoor use.
- Integrated ventilation.
- 2x86kw ac marine motors
- Integrated power mgmt and control system
- Remote wireless control possibilities
- e-maintenance possible

MCC internally

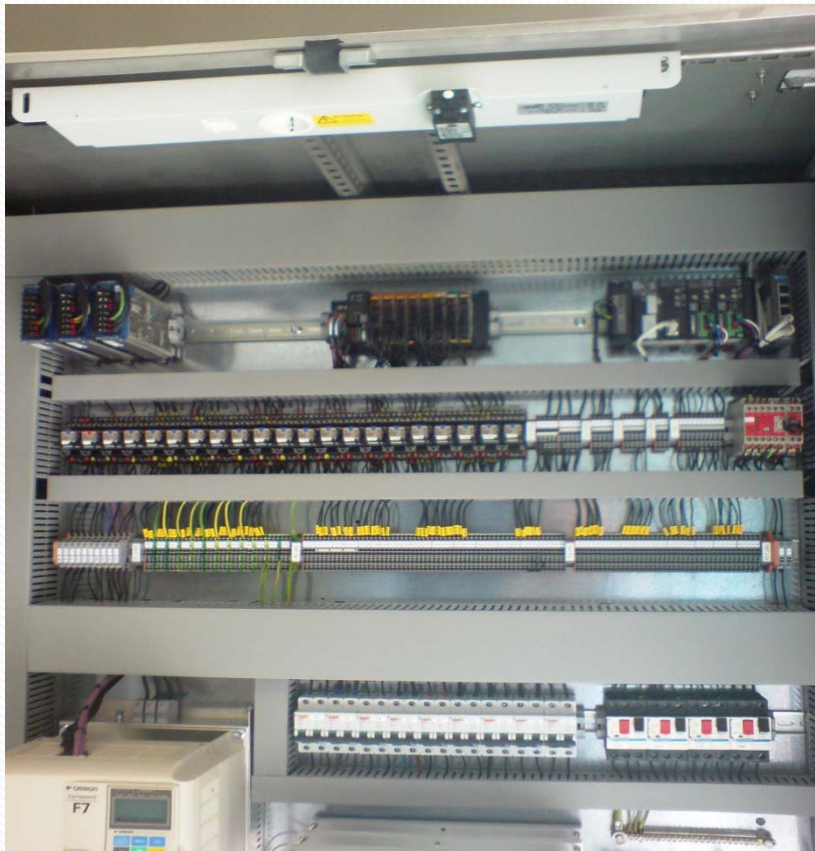


- 2x 110kw ac drives(left high)
- RFI filters according to EN61800-3 (left low)
- Brake choppers (left low)
- Selective power dist. According to FEB91 (right low)
- Integrated control system (right high)
- Wireless remote control
- Integrated alarm and operator station (door)
- IP56 for outdoor use.
- Light and ac socket fixture in door.
- Footprint:
- HxBxD=2200x2000x600mm

Remote and stationary control

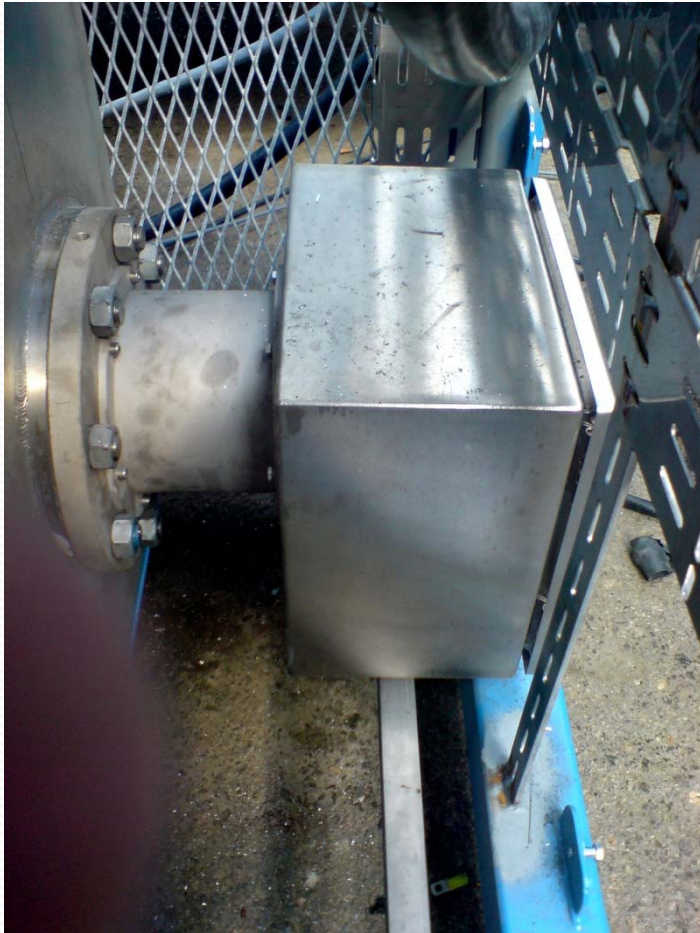


Control section of MCC



- All control and power components are off the shelf.
- Available all over the world.
- Control system is based on Device net distributed IO.
- Enabling seamless communication and "drilldown" from WEB to each sensor, or AC drive.
- Very flexible in a retrofit situation, as all data cables can be reused, just add on desired IO
- Electronic brake and safety IO monitoring system

Liquide cooled resistor unit



- 2 x 26kw brake resistor
- Integrated in HPU reservoir
- Excellent cooling capacity
- Taylor made, compact solution
- Temperature monitoring in tank.